

DataAssist Project

DataAssist Project

DataAssist Project is a web-based project management and tracking tool. The software was designed for comprehensive management of a project from initiation through to completion.

Using DataAssist Project will ensure that every step of a project is professionally managed, from the initial quotation and engagement phase, through the planning and resource allocation across one or more projects, to the overall oversight of people and processes.

DataAssist Project features a strong scheduling system which allows managers to plan and plot their staff's availability and workload. Individual tasks can be automatically scheduled by the system, manually scheduled or left unscheduled, depending on requirements. Schedule reports allow managers to determine who is over- or underworked, the sites to be visited and which tasks are on schedule or ahead of schedule. The cause of delivery slow-downs can also be pinpointed.

If a person has, for example, been assigned to a project and starts falling behind on the expected completion date, managers can look back on the schedule to see which unscheduled tasks (e.g. support calls) affected the person's delivery and to what extent. The

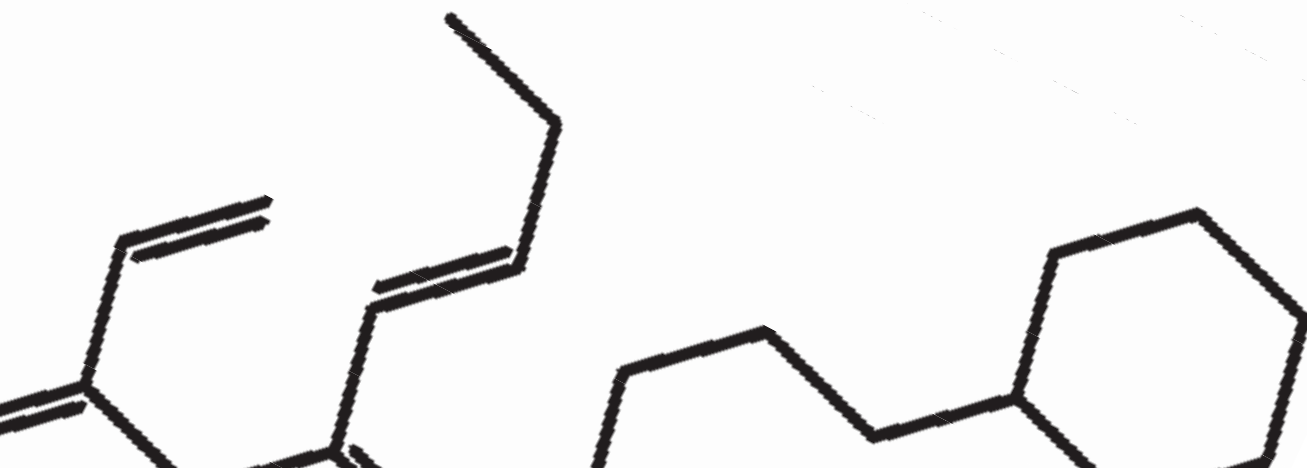
automatic scheduling system also makes provision for warm-up and cool-down times on tasks to allow sufficient buffers when a person must switch between tasks. This helps to prevent resources from being congested with too many tasks on a given day.

The system is designed to ensure that time is only allocated and billed for one task at a time, even if a person is involved in multiple projects. Furthermore, once approved, the relevant data can automatically be transferred to the company's billing system in the required format.

Easy Reporting

Managers are able to call up reports relevant to specific persons, either according to the tasks they are involved with, or time spent. This makes it easier for everyone concerned to gain a clear insight into the time spent on each task, as well as the manner in which a person divides his or her time over a given period.

In addition, the management dashboard system, can be used to provide detailed views of a user's domain at a glance. These dashboards can be customised for roles or even users, to allow each user to be quickly informed about critical information. The project manager's dashboard may, for example, contain summaries of the overall status of the projects he or she manages, with schedule summaries for



Web-based Service

DataAssist Project is a web-based application, which can be hosted by a company responsible for running various projects, or a third party. This means that staff can keep their timesheets updated, no matter where they are or which projects they are working on. All they need is network or Internet access.

DataAssist Project was developed as a complete project management tool for large or small businesses. The application was designed to offer comprehensive management and reporting facilities, without compromising on user-friendliness.

Contact

Physical Address
1 Stirrup Lane
Woodmead Office Park
Woodmead
Sandton

Postal Address
Postnet suite #404
Private Bag 29, Gallo Manor
South Africa 2052

T (+27 11) 802 0919
F (+27 11) 646 0745

info@dataassist.co.za
<http://www.dataassist.co.za>

Other services and products from DataAssist:



Do you want to see your data visually as charts, graphs and cubes? Then you need Business Intelligence.



Would you like to enable Business Intelligence users Spatially? See your data on living maps? Use DataAssist Spatial Business Intelligence.



Make complex business processes easier to manage and control. Get Workflow Process Management.



Save money by managing projects better. Make Business Performance Management part of your company.



The life source of all organizations is their data. By managing the entire data life cycle, it enables better decision management; it reduces risk and enhances productivity and operational efficiency. Let us show you the way.

Get a single view of your business with DataAssist

Copyright DataAssist © 2012